

**2024**

CITY OF VICTORIA | Engineering & Public Works

# Leighton Road Update

**Information Session**



The City of Victoria is located on the homelands of the Songhees and Esquimalt People.





# Before we begin...

- **Mobility needs are personal**
  - What works best for me may not work for my neighbour
  - The City aims to provide safe options for everyone to get around in Jubilee regardless of income, age or abilities
- **Please be respectful and share the space**
  - Raise hands or put questions/comments in the chat
  - Remain muted when not speaking
- **This project was led by the City of Victoria**
  - We're grateful to the SJNA for inviting us, advocating on behalf of residents and coordinating this meeting
  - Please direct comments about the project/process to the City rather than the SJNA



# Before we begin...

- **We have heard you**

- We received high volume of correspondence on this topic in July / August
- Many residents concerned about the closure and the access changes, lack of consultation, future of this project as described in the postcard
- We also received supportive feedback
- City is taking a step back and re-evaluating this project:
  - SD61 has future redevelopment plans for Sundance-Bank Elementary site – we consider this a better opportunity to rediscuss the best use of the space
  - The Leighton Road barricades (Duchess to Bank) will be removed at the completion of the Fort Street construction project

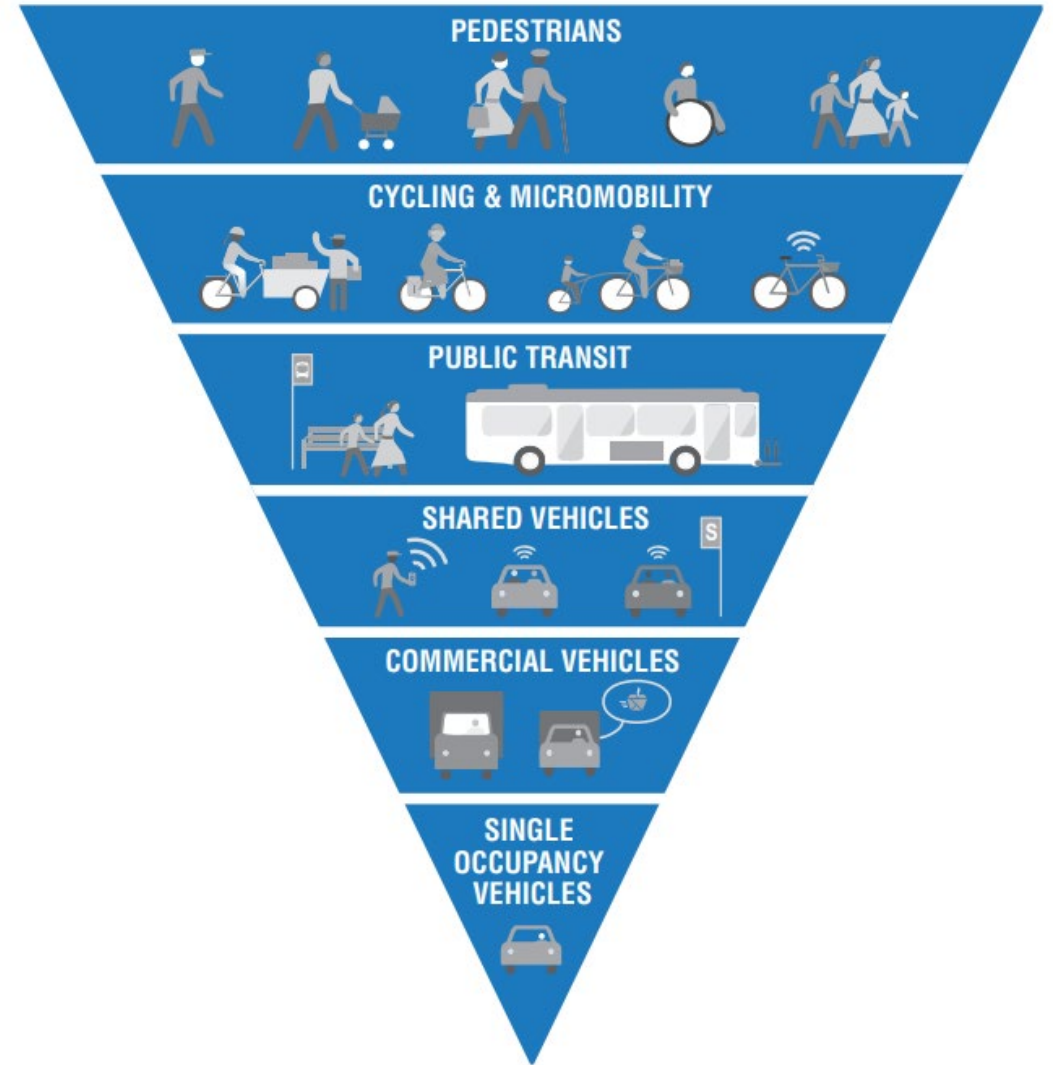
# Purpose

- Connect with community members about the current closure and provide an update
- Discuss future opportunities
- Answer questions

# Our Mobility Values

- Safety
- Liveability and Well-being
- Equity and Affordability
- Climate Action
- Accessibility and Connectivity

Figure 10: Hierarchy of Transportation and Mobility Priorities



# Street Closures – Council Direction

On January 18, 2024, Council directed staff to:

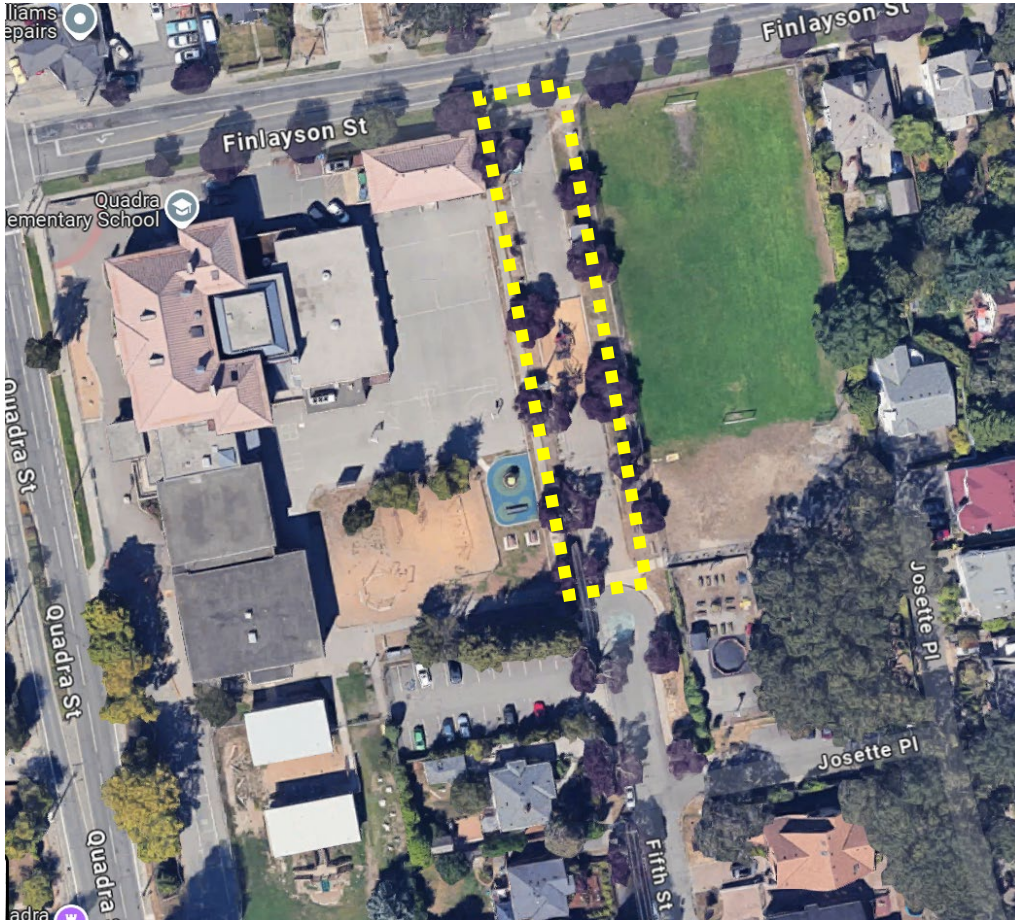
***Identify, accelerate, and pilot shared street or partial or complete road closures to create or enable new boulevards, community spaces, placemaking initiatives, and green spaces; and that staff use some or all of the following criteria to guide and prioritize pilot projects:***

- 1. identify areas in which overall impacts to traffic flow are marginal;*
- 2. enhance safety for children, pedestrians, seniors, and those with mobility challenges, as well as pilots that enhance liveability and community vibrancy;***
- 3. consider ways of activating streets and supporting small businesses via new pedestrianized zones, with the emphasis on village centres;*
- 4. choose projects that connect green spaces bifurcated by roads and/or connect school grounds to green spaces;***
- 5. ensure prioritization for greenspace, pollinator corridors, biodiverse native plants, shade trees, and, where possible, food-producing plants;*
- 6. where possible, implement bioswales, rainwater gardens, and other green stormwater strategies*
- 7. Identify the impact changed vehicle traffic will have on streets affected by road closures.*



# Street Closures – Examples

Fifth Street (behind Quadra Elementary School – Victoria, BC)





# Street Closures – Examples

## McClure Street (Fairfield) – Victoria, BC

Before



After



# Street Closures – Examples

Woodland Dr and 2<sup>nd</sup> Ave – Vancouver, BC



Before



Temporary

After





# Fort Street Sanitary Sewer Replacement Work

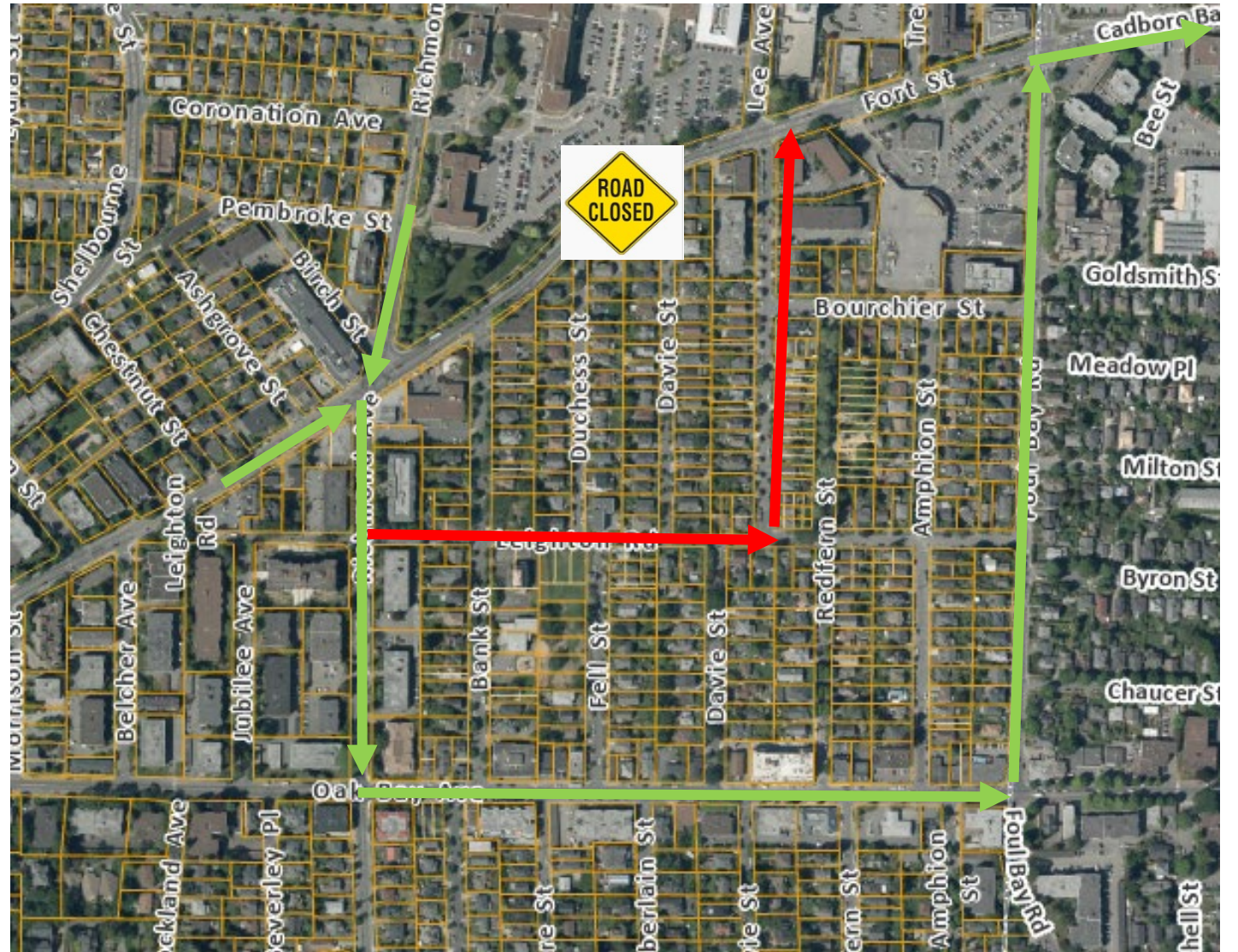
- The City is replacing a sewer main on Fort Street
- Part of a wider effort across Victoria to protect critical infrastructure from seismic and climate events
- Work planned to continue throughout 2024





# Neighbourhood Impacts

- Leighton Rd closest east-west route for detouring traffic
- Traffic Management Plan by construction team proposed Leighton block closure to avoid overwhelming neighbourhood with ~15,000 vehicles per day
- Typical practice in major construction projects





# Leighton Road

- **Street Function (from Official Community Plan):**
  - Local Street
  - Greenway Corridor
  - All Ages & Abilities Bike Route
- **Adjacent Land Use:**
  - Agamemnon and Eleni Kasapi Park
  - Sundance-Bank Elementary School (currently under re-development)



## All Ages and Abilities Cycling Network

- Priority Network
- - - Expanded Network\*

\*Exact route, design and sequencing to be determined through future study and consultation processes.



# Leighton Road at Bank Street

- **Traffic Conditions:** Longstanding short-cut route, with higher volumes than most local streets city-wide
  - Various traffic calming elements introduced over the years (chicanes, diverters, speed humps)
  - > 1,000 vehicles per day (Victoria's threshold for local streets)
  - Vehicle speeds are acceptable (approx. 30-35 km/h)
- **Timing:** The Fort Street construction project / traffic management plan presented the opportunity to act sooner rather than later



# Initial Pilot Project Concept

- Reusable, easily removable and low-cost materials provide flexibility in the space
- North side pedestrian walking area connects crosswalk at Richmond with community
- < 1 week to construct temporary condition
- More data collection on surrounding streets once Fort Street project completes and "business as usual" returns



# What we've heard

- **Mixed reviews on proposed change**
  - Negative feedback regarding local vehicle access to surrounding streets
  - Frustration with timeline and lack of consultation
  - Confusion around current closure for Fort Street project versus planned pilot project
  - Concern that a pilot project would be permanent
  - Support from some residents about more walkable/bikeable neighbourhood



# What's Next

- Leighton Road barricades will remain in-place for duration of construction project
- Leighton Road barricades to be removed once Fort Street reopens and “business as usual” returns
- Conversation about this space will continue:
  - When there is more clarity on Sundance-Bank Elementary School plans
  - When traffic patterns have settled and neighbourhood access from Fort Street is re-established
  - When the neighbourhood (and City staff) have more capacity for dialogue
- For now:
  - **Continue to stay tuned into Official Community Plan updates**
  - Guides high-level policies that inform the use of road space
  - Includes targeted updates for Jubilee, Fort Street and Oak Bay Avenue



# Thank You!

## Questions?